

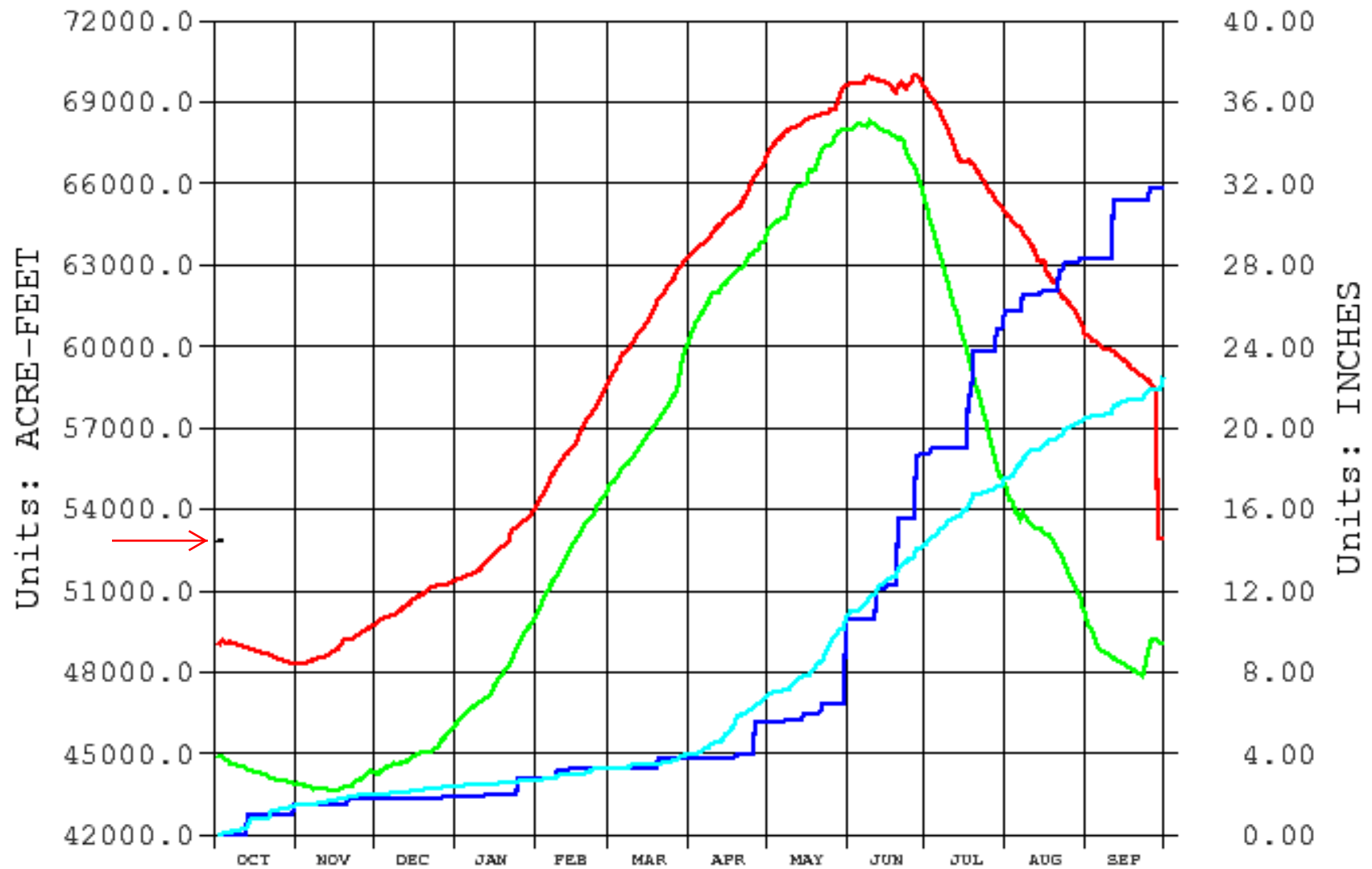
Frenchman Cambridge 2019 Storage Water Supply

Reservoir Content / Irrigation Supply

Reservoirs 2019	Swanson		Hugh Butler		Harry Strunk		Total AF
	Elevation	Acre-Feet	Elevation	Acre-Feet	Elevation	Acre-Feet	AF
Top of Irrigation Pool	2752.00	110,175	2581.80	36,224	2366.10	34,647	181,046
FCID Contracted Shut Off Elevation/Content AF	2725.00	18,958	2561.00	11,212	2343.00	7,897	38,067
<i>FCID Contracted Irrigation Pool Capacity at 100% Full</i>	27.00	91,217	20.80	25,012	23.10	26,750	142,979
Elevation / Content in AF	2737.81	52,870	2568.40	18139	<u>2361.97</u>	<u>27,849</u>	98,858
% of Full Capacity	48.0%		50.1%		80.4%		54.6%
Current 2019 Irrigation Supply	Feet	A.F.	Feet	A.F.	Feet	A.F.	A.F.
	12.81	33,912	7.40	6,927	18.97	19,952	60,791
Wednesday, October 03, 2018	% Irr. Pool	37.2%	% Irr. Pool	27.7%	% Irr. Pool	74.6%	42.5%
Oct. 3, 2017 (AF / Elev)	2,736.66	49,175	2,565.41	15,115	2,353.06	16,665	80,955
One Year Change in Storage (AF / Elevation)	1.15	3,695	2.99	3,024	8.91	11,184	17,903

Archive Data From 1 OCT Through 30 SEP

Plotted 10/03/2018 08:22

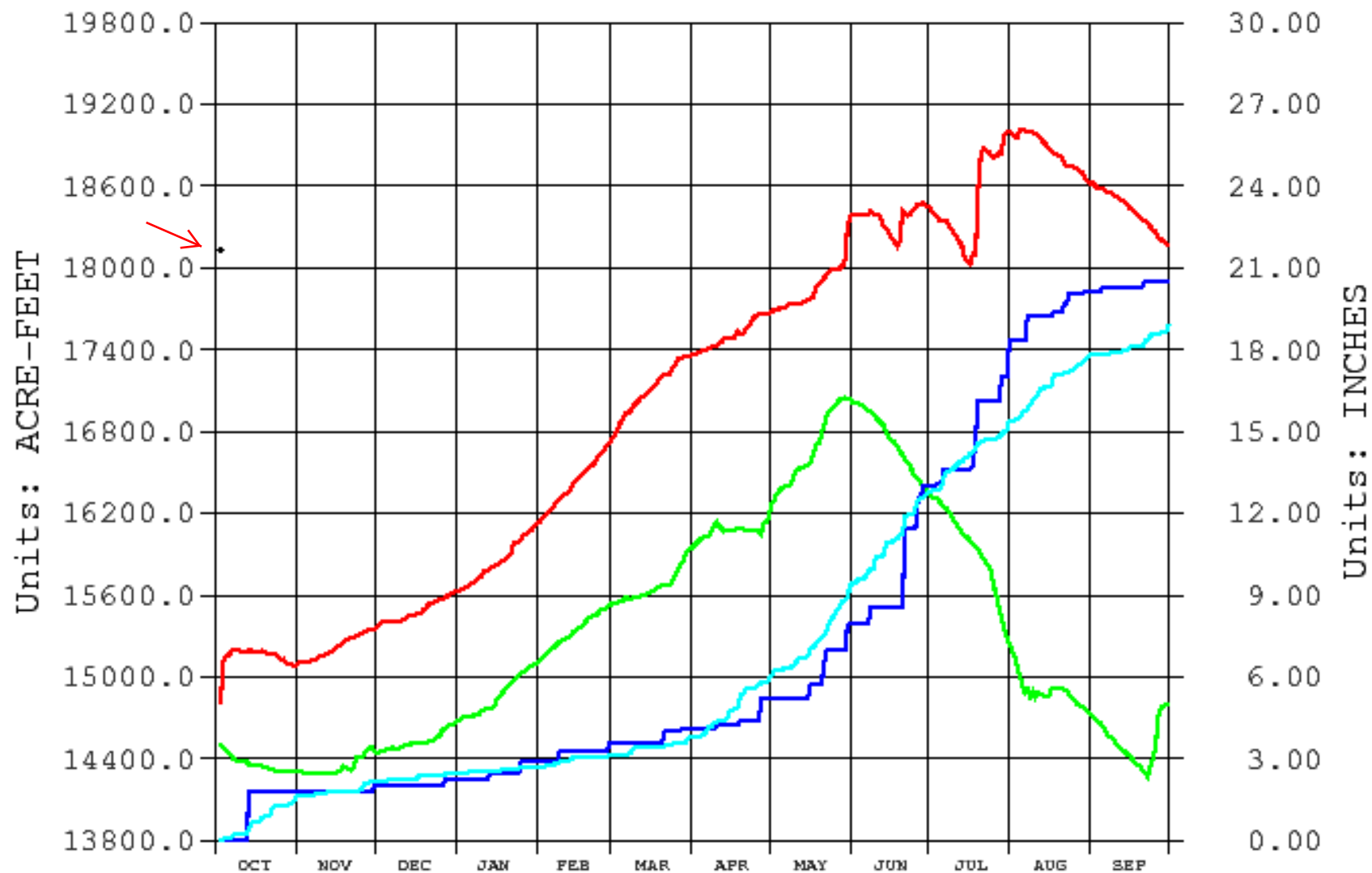


TRNE Swanson Lake (Trenton Dam), NE
AF Reservoir Storage Content (acre-feet)
PP Cumulative Total Precip. (inches)
PP 10yr avg Cumulative Total Precip. (inches)

2019 2018 2017
2018
2018

Archive Data From 1 OCT Through 30 SEP

Plotted 10/03/2018 08:24

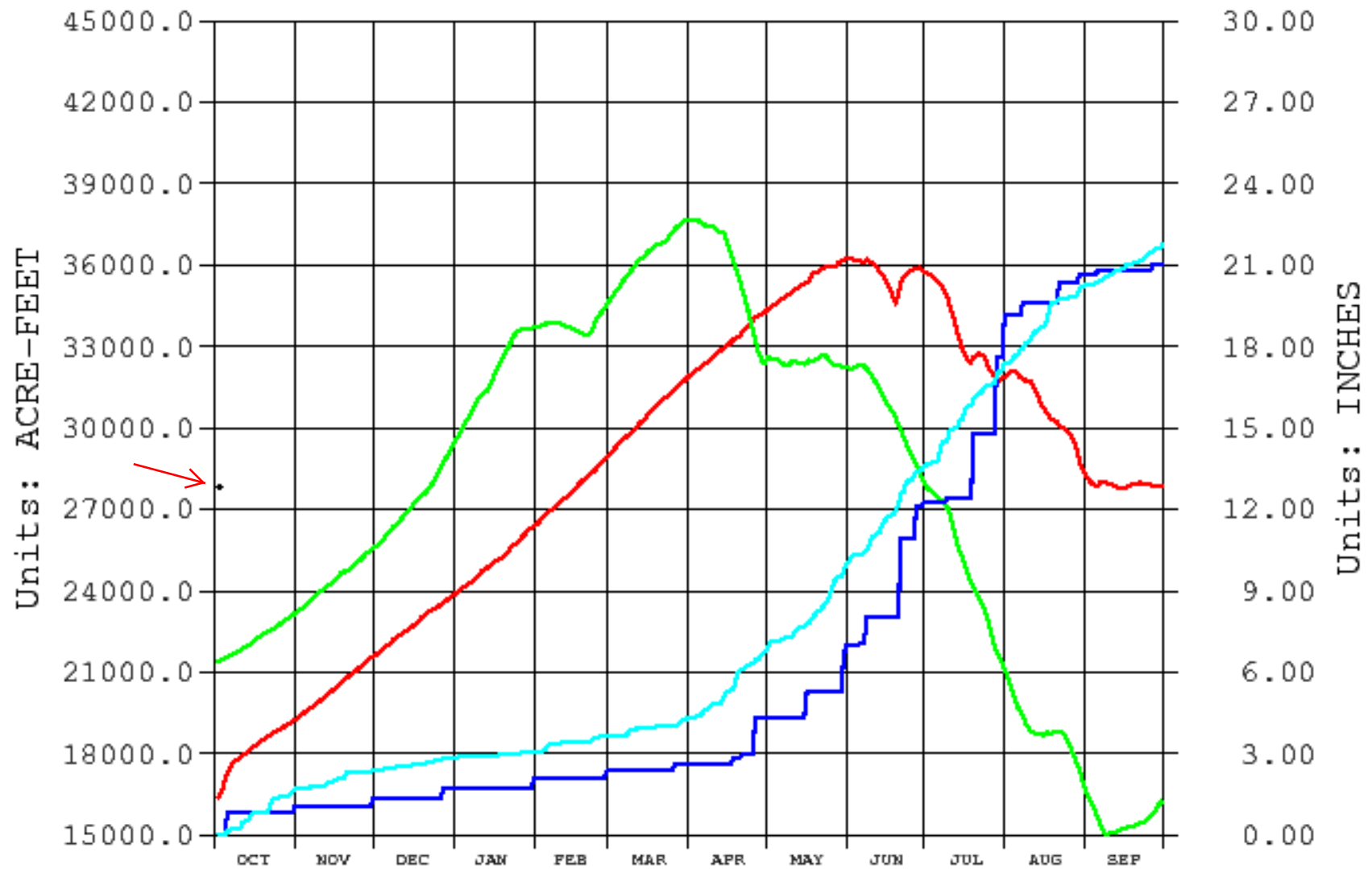


HBNE Hugh Butler Lake (Red Willow Dam), NE
— AF Reservoir Storage Content (acre-feet)
— PP Cumulative Total Precip. (inches)
— PP 10yr avg Cumulative Total Precip. (inches)

2019 2018 2017
2018
2018

Archive Data From 1 OCT Through 30 SEP

Plotted 10/03/2018 08:26

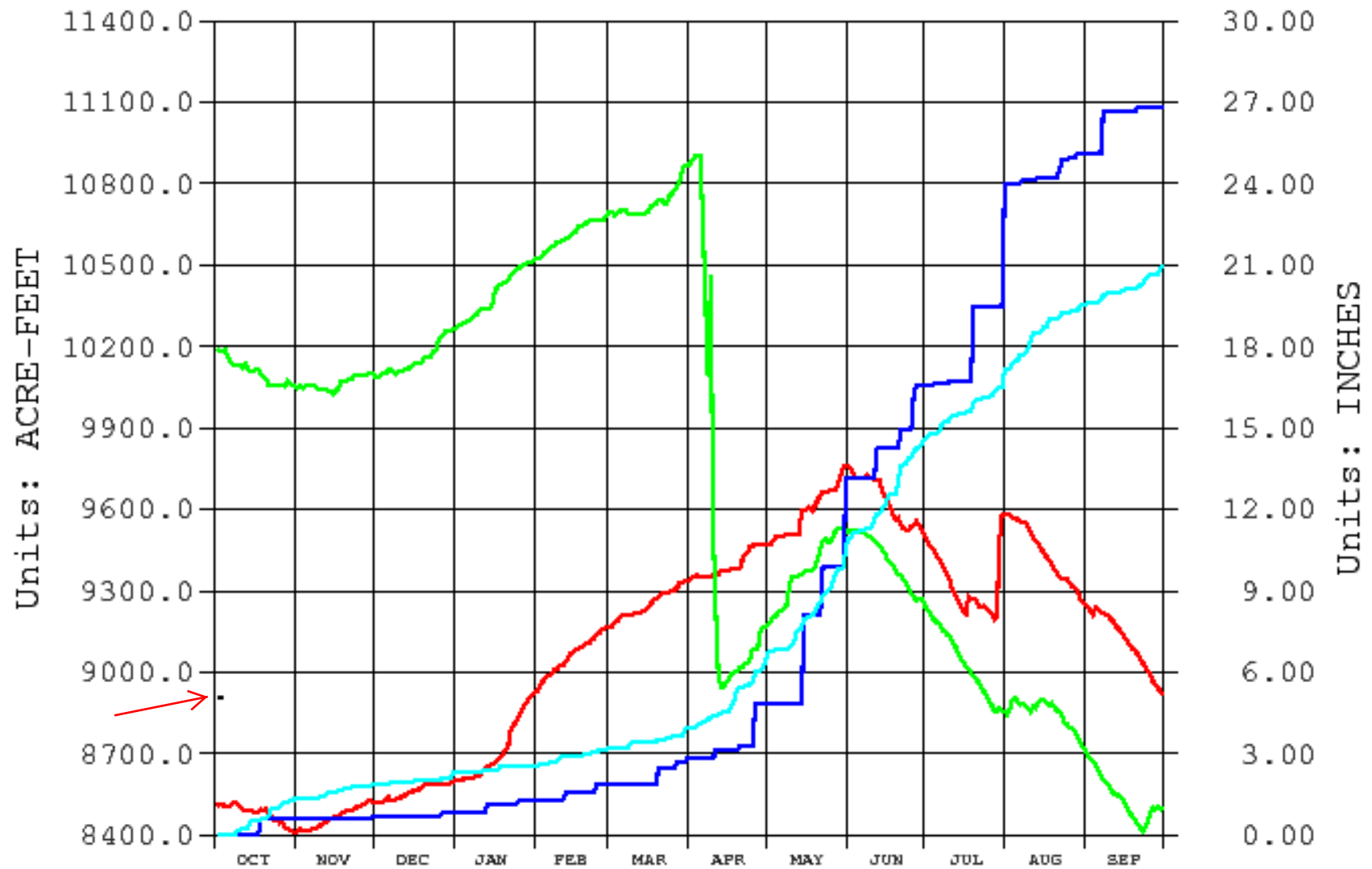


HSNE Harry Strunk Lake (Medicine Creek), NE
— AF Reservoir Storage Content (acre-feet)
— PP Cumulative Total Precip. (inches)
— PP 10yr avg Cumulative Total Precip. (inches)

2019 2018 2017
2018
2018

Archive Data From 1 OCT Through 30 SEP

Plotted 10/03/2018 08:28

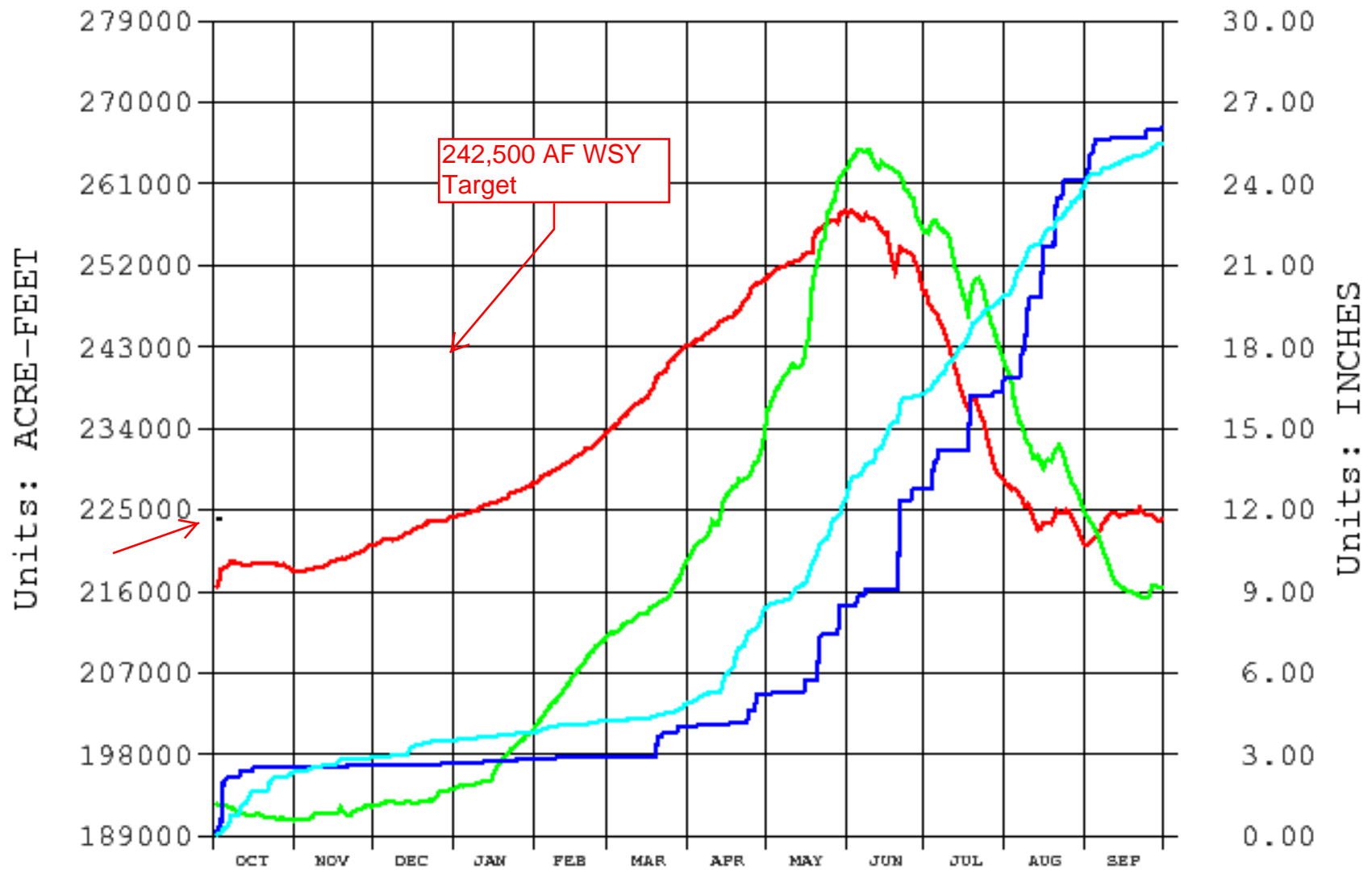


EDNE Enders Dam, NE
— AF Reservoir Storage Content (acre-feet)
— PP Cumulative Total Precip. (inches)
— PP 10yr avg Cumulative Total Precip. (inches)

2019 2018 2017
2018
2018

Archive Data From 1 OCT Through 30 SEP

Plotted 10/03/2018 08:27

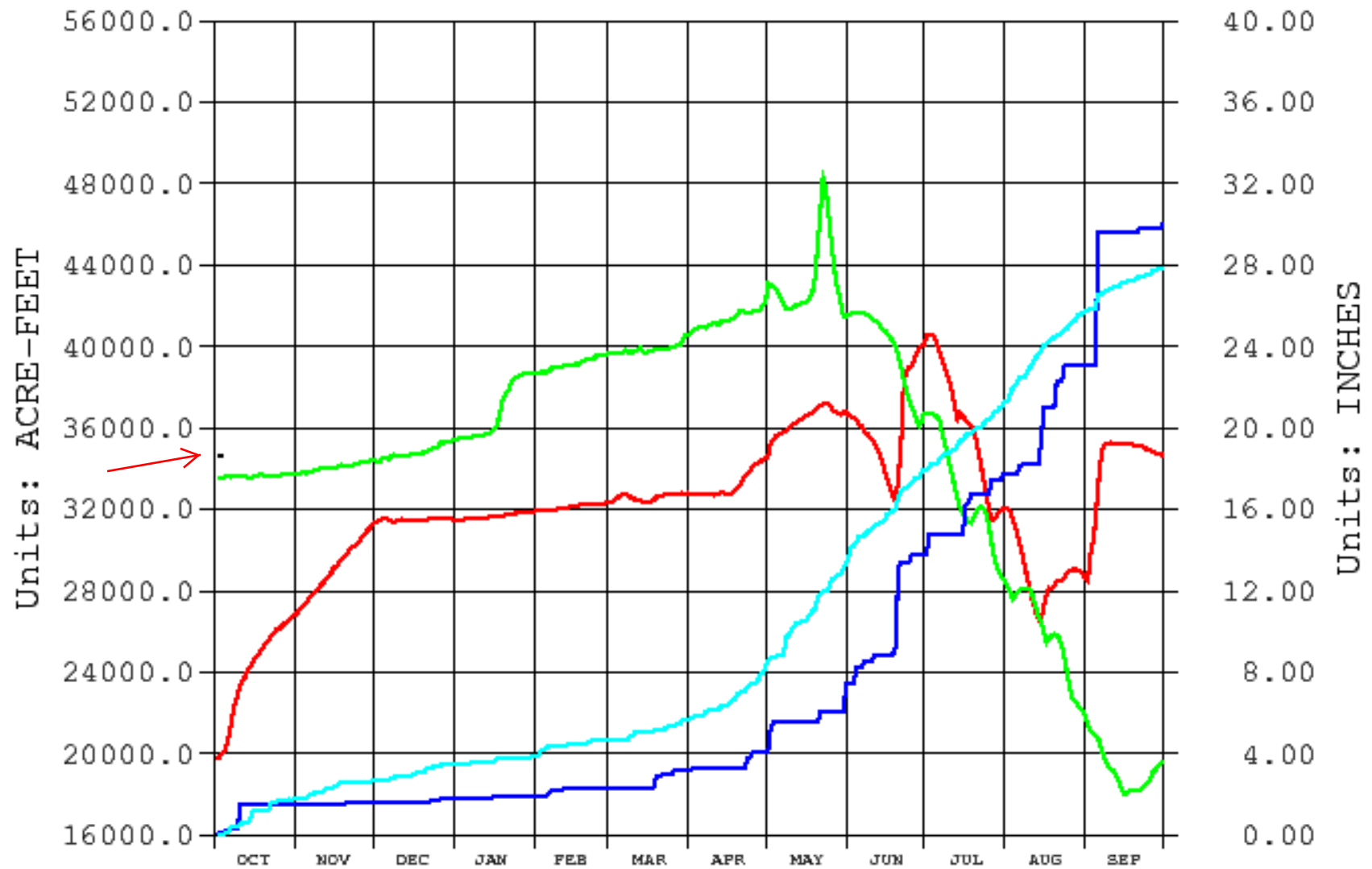


HCNE Harlan County Dam, NE
AF Reservoir Storage Content (acre-feet)
PP Cumulative Total Precip. (inches)
PP 10yr avg Cumulative Total Precip. (inches)

2019 2018 2017
2018
2018

Archive Data From 1 OCT Through 30 SEP

Plotted 10/03/2018 08:30



LVKS

Lovewell Dam, KS

— AF Reservoir Storage Content (acre-feet)
— PP Cumulative Total Precip. (inches)
— PP 10yr avg Cumulative Total Precip. (inches)

2019 2018 2017
2018
2018